

Emulation of one Camera by another Camera

Glenn Davis <gdavis@gluonics.com>

April 1, 2018

Introduction

The goal of this package **colorSpec** vignette is to reproduce the findings of [1] and [2], where a camera with Foveon X3 sensor is modified to closely emulate the spectral responses of the human eye. The two modifications are:

- a prefilter in front of the camera; this modification is optical and classical, see [3]
- a 3x3 matrix applied to the camera output; this modification is in hardware or in software

The figures below are best viewed on a display calibrated for sRGB. Featured functions in this vignette are: **emulate()** and **plotPatchesRGB()**.

```
library( colorSpec )
```

1 BT.709.RGB and Foveon X3

The camera **BT.709.RGB** is not real; it is a theoretical camera whose spectral responses are linear combinations of the responses of the human eye (the *standard observer*). See the man page of **BT.709.RGB** for details. Create a fixed wavelength vector, and resample both the Foveon camera, and the reference (the ideal) camera to the same wavelengths. Calibrate and plot both cameras.

```
wave = 380:720
# read the Macbeth ColorCheck target
path = system.file( 'extdata/cameras/FoveonX3.txt', package='colorSpec' )
foveon = radiometric( readSpectra( path, wave=wave ) )
reference = resample( BT.709.RGB, wave=wave )
# calibrate so that both have the same response RGB=(1,1,1) to Illuminant E
illum = illuminantE(wave=wave)
foveon = calibrate( foveon, stimulus=illum )
reference = calibrate( reference, stimulus=illum )
# plot both for comparison
par( oma=c(0,0,0,0), mai=c(0.5,0.9,0.1,0) )
plot( reference, main='' )
plot( foveon, lty=2, add=TRUE, legend=FALSE, color=c('red','green','blue') )
```

See Figure 1. These spectral responses are obviously quite different; although the area under all 6 curves is 1. To visualize the difference we will use the ever-popular *ColorChecker* target. The data for this target has been kindly provided in CGATS format by [4]. *ColorChecker* is a Registered Trademark of X-Rite, and X-Rite is a Trademark.

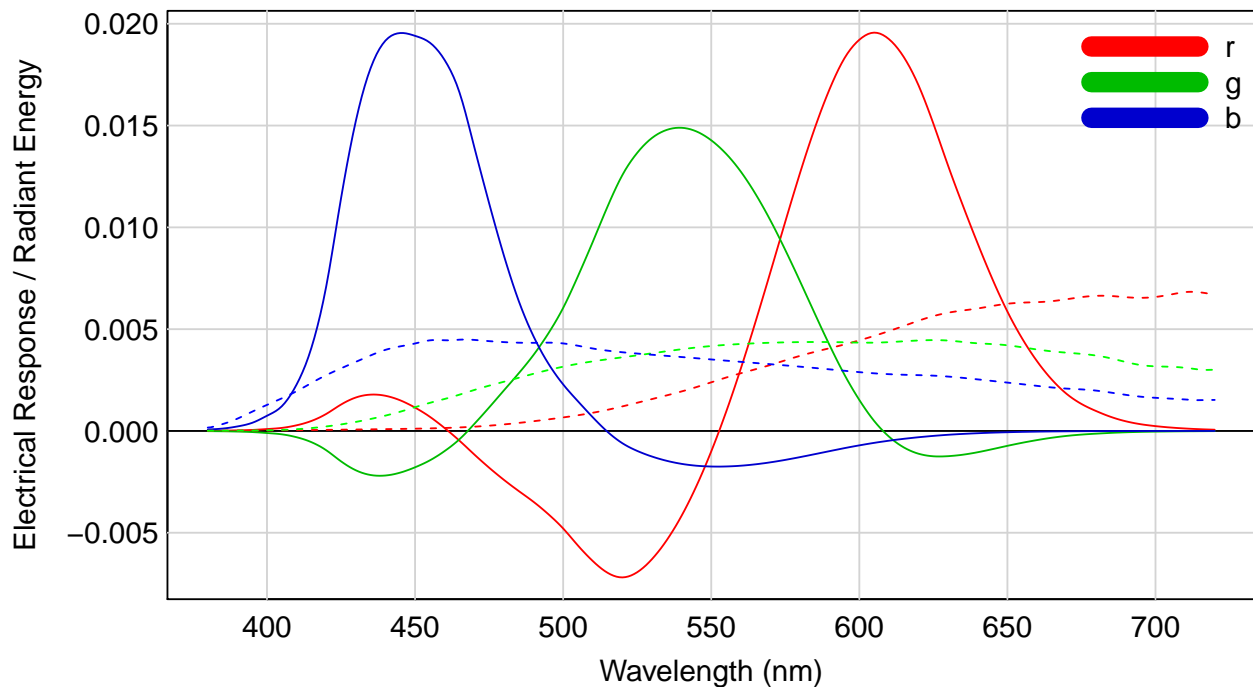


Figure 1: Reference camera BT.709.RGB (solid) vs Foveon X3 camera (dashed)

```
# read the Macbeth ColorCheck target
path = system.file( 'extdata/targets/CC_Avg30_spectrum_CGATS.txt', package='colorSpec')
MacbethCC = readSpectra( path, wave=wave ) # MacbethCC is a 'colorSpec' object
MacbethCC = MacbethCC[ order(MacbethCC$SAMPLE_ID), ] # still class 'colorSpec'
print( extradata(MacbethCC), row.names=F )
```

| SAMPLE_ID | SAMPLE_NAME | Munsell | ISCC-NBS_Name | LEFT | TOP | WIDTH | HEIGHT |
|-----------|---------------|----------------|------------------------|------|-----|-------|--------|
| 1 | dark skin | 3YR 3.7/3.2 | moderate brown | 7 | 9 | 29 | 29 |
| 2 | light skin | 2.2YR 6.47/4.1 | light reddish brown | 40 | 9 | 29 | 29 |
| 3 | blue sky | 4.3PB 4.95/5.5 | moderate blue | 73 | 9 | 29 | 29 |
| 4 | foliage | 6.7GY 4.2/4.1 | moderate olive green | 106 | 9 | 29 | 29 |
| 5 | blue flower | 9.7PB 5.47/6.7 | light violet | 139 | 9 | 29 | 29 |
| 6 | bluish green | 2.5BG 7/6 | light bluish green | 172 | 9 | 29 | 29 |
| 7 | orange | 5YR 6/11 | strong orange | 7 | 42 | 29 | 29 |
| 8 | purplish blue | 7.5PB 4/10.7 | strong purplish blue | 40 | 42 | 29 | 29 |
| 9 | moderate red | 2.5R 5/10 | moderate red | 73 | 42 | 29 | 29 |
| 10 | purple | 5P 3/7 | deep purple | 106 | 42 | 29 | 29 |
| 11 | yellow green | 5GY 7.1/9.1 | strong yellow green | 139 | 42 | 29 | 29 |
| 12 | orange yellow | 10YR 7/10.5 | strong orange yellow | 172 | 42 | 29 | 29 |
| 13 | Blue | 7.5PB 2.9/12.7 | vivid purplish blue | 7 | 75 | 29 | 29 |
| 14 | Green | 0.25G 5.4/8.65 | strong yellowish green | 40 | 75 | 29 | 29 |
| 15 | Red | 5R 4/12 | strong red | 73 | 75 | 29 | 29 |
| 16 | Yellow | 5Y 8/11.1 | vivid yellow | 106 | 75 | 29 | 29 |
| 17 | Magenta | 2.5RP 5/12 | strong reddish purple | 139 | 75 | 29 | 29 |
| 18 | Cyan | 5B 5/8 | strong greenish blue | 172 | 75 | 29 | 29 |
| 19 | white | N9.5/ | white | 7 | 108 | 29 | 29 |
| 20 | neutral 8 | N8/ | light gray | 40 | 108 | 29 | 29 |
| 21 | neutral 6.5 | N6.5/ | light medium gray | 73 | 108 | 29 | 29 |
| 22 | neutral 5 | N5/ | medium gray | 106 | 108 | 29 | 29 |
| 23 | neutral 3.5 | N3.5/ | dark gray | 139 | 108 | 29 | 29 |
| 24 | black | N2/ | black | 172 | 108 | 29 | 29 |

Note that **MacbethCC** is organized as '**df.row**' and contains extra data for each spectrum, most importantly the coordinates of the patch rectangles.

Calculate the RGB responses to both cameras and display them.

```
RGB.ref = product( illum, MacbethCC, reference)  # this is *linear* sRGB
# add the rectangle data to RGB.ref, so the patches are plotted in proper places
# in cbind() use as.data.frame.model.matrix() so RGB is a single column
df.ref = cbind( extradata(MacbethCC), as.data.frame.model.matrix(RGB.ref) )
# display in proper location, and use the sRGB display transfer function
par( omi=c(0,0,0,0), mai=c(0,0,0,0) )
plotPatchesRGB( df.ref, gamma='sRGB', back='gray20', labels=FALSE )
# repeat with foveon camera, and add to existing plot
RGB.foveon = product( illum, MacbethCC, foveon )
df.foveon = cbind( extradata(MacbethCC), as.data.frame.model.matrix(RGB.foveon) )
plotPatchesRGB( df.foveon, gamma='sRGB', shape='bottomright', add=T, labels=FALSE )
```

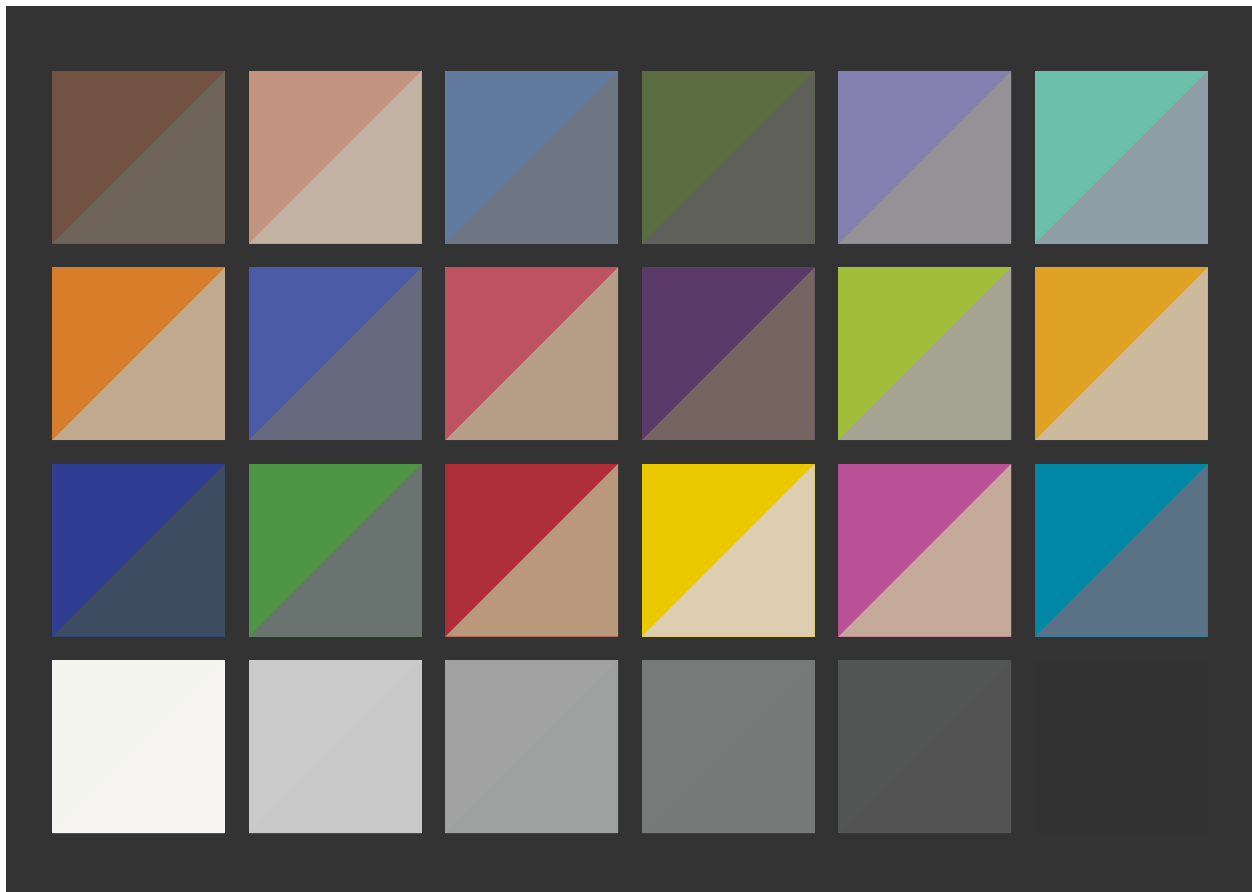


Figure 2: Rendering with Illuminant E, with Foveon RGB in bottom right half

There is only agreement for the neutral patches, as might be expected.

Now modify the Foveon camera, using both a pre-filter and a matrix, to emulate the reference.

```
foveon.mod = emulate( foveon, reference, filter=TRUE, matrix=TRUE )
par( omi=c(0,0,0,0), mai=c(0.5,0.9,0.2,0) )
plot( reference, main='' )
plot( foveon.mod, lty=2, add=TRUE, legend=FALSE )
```

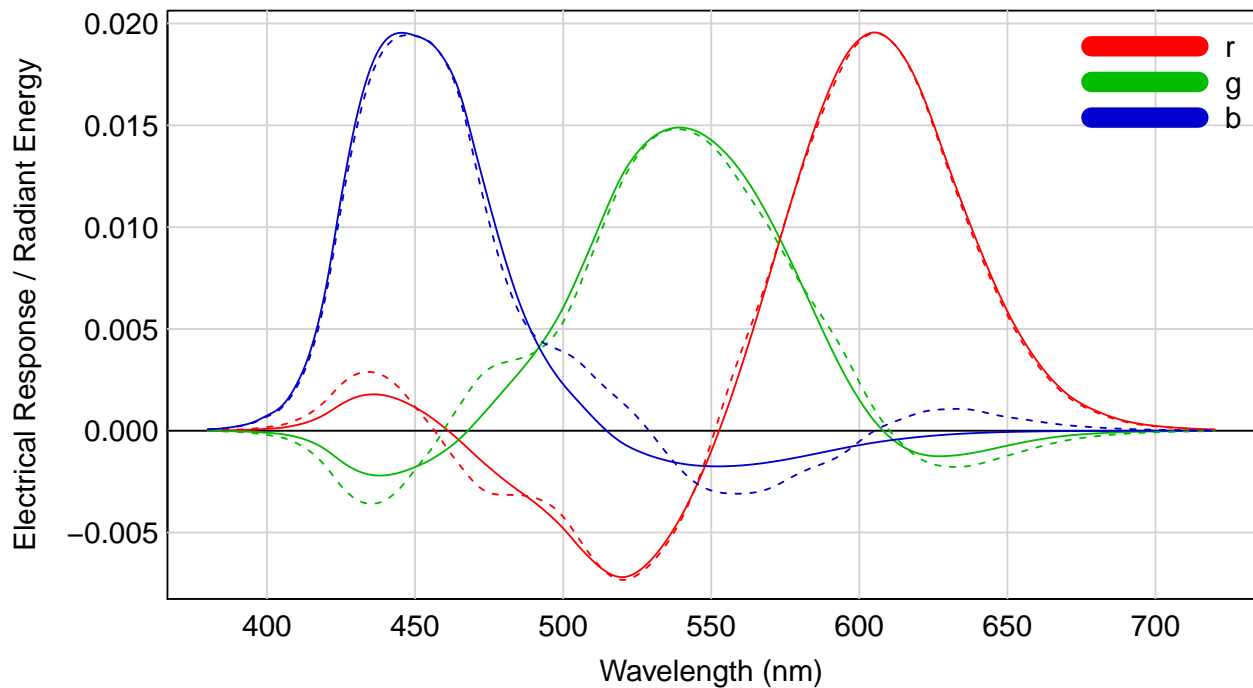


Figure 3: Reference camera (solid) vs the modified Foveon camera (dashed)

The agreement is now much better. Replot the ColorChecker to visualize the improvement.

```
par( omi=c(0,0,0,0), mai=c(0,0,0,0) )
plotPatchesRGB( df.ref, gamma='sRGB', back='gray20', labels=FALSE )
# repeat with modified foveon camera, and add to existing plot
RGB.foveon.mod = product( illum, MacbethCC, foveon.mod )
df.foveon.mod = cbind( extradata(MacbethCC), as.data.frame.model.matrix(RGB.foveon.mod) )
plotPatchesRGB( df.foveon.mod, gamma='sRGB', shape='bottomright', add=T, labels=FALSE )
```



Figure 4: Rendering with Illuminant E, with modified Foveon RGB in bottom right half

The agreement in the RGBs is now much better, c.f. Figure 2. There is a noticeable difference in the **Red** and **Magenta** patches, and minor differences in some others. However, the neutrals are now worse; the green is low so they have a purple tint. A new feature - *white-point preservation* - might be added to `emulate()` in future versions, using the techniques in [5]. Alternatively, one could also re-calibrate (white-balance) `foveon.mod`.

The computed pre-filter and matrix are attached to `foveon.mod`, and are easy to print and plot.

```
attr(foveon.mod,"emulate")$A

      r      g      b
Red   13.054064 -7.362972  5.627526
Green -10.008693 10.482482 -13.407764
Blue   2.848111 -3.419678 11.254107

par( omi=c(0,0,0,0), mai=c(0.5,0.9,0.2,0) )
prefilter = attr(foveon.mod,"emulate")$filter
specnames(prefilter) = "prefilter for modified Foveon"
plot( prefilter, main='', ylim=c(0,1.1) )
```

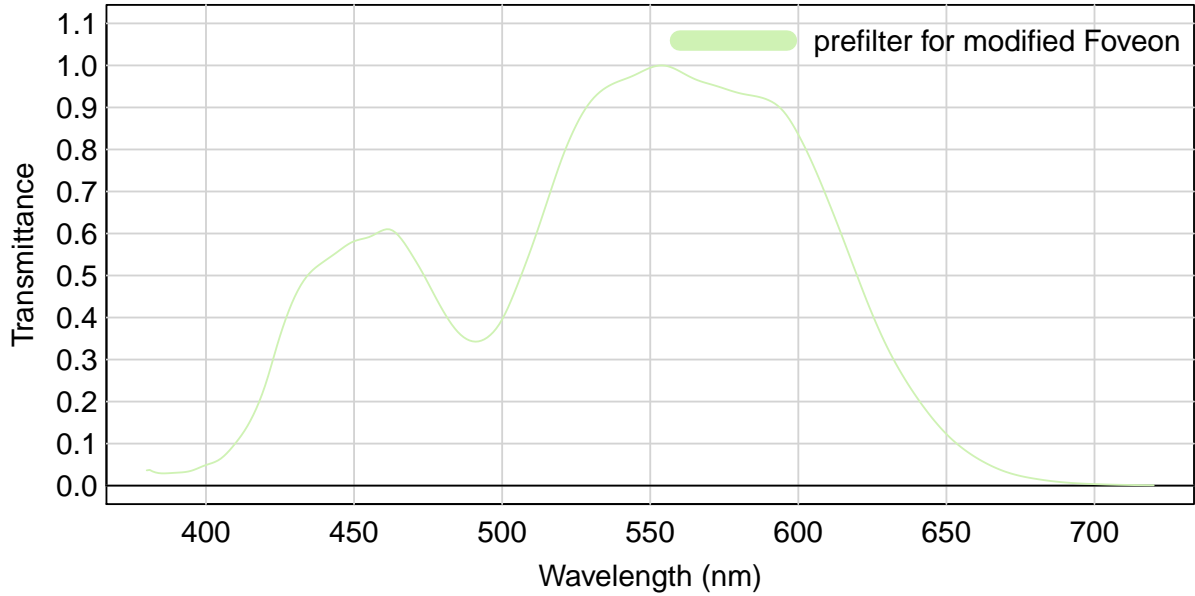


Figure 5: Prefilter for the modified Foveon camera

This curve is broadly similar to those in [1] and [2]. All are bimodal and have a valley near 500nm. But the peaks are in different locations, shaped differently, and both of their peaks have a maximum of 1. I suspect that they are different because of different optimization criteria. The function `emulate()` uses a simple least-squares criterion with the same weight at every wavelength. [1] uses a “Metamerism Index” defined in [6]. This index uses color targets which *might* be the same as those in the *ColorChecker*. [2] uses a criterion based on principal angles between subspaces. This option might be added to `emulate()` in the future. For a good comparison of the other 2 prefilters, see Figure 6 in [2].

2 Red Epic Dragon and Plumbicon

The plumbicon, introduced in 1965, is a graylevel television camera tube. The Red Epic Dragon, announced in 2013, is a modern high-speed cinema RGB camera with 19.4 Megapixel CMOS sensor. We will find a good linear combination of the RGB responsivities of the Dragon to emulate the graylevel responsivity of the plumbicon.

Create a fixed wavelength vector, and resample both cameras to the same wavelengths. Then calibrate and plot both cameras.

```

wave = 400:700
# read the 2 cameras
path = system.file( 'extdata/cameras/Plumbicon30mm.txt', package='colorSpec')
plumbicon = readSpectra( path, wave=wave )
path = system.file( 'extdata/cameras/Red-Epic-Dragon.txt', package='colorSpec')
dragon = readSpectra( path, wave=wave )
# calibrate to normalize the response to Illuminant E
illum = illuminantE(wave=wave)
plumbicon = calibrate( plumbicon, stimulus=illum )
dragon = calibrate( dragon, stimulus=illum )
# plot both for comparison

```

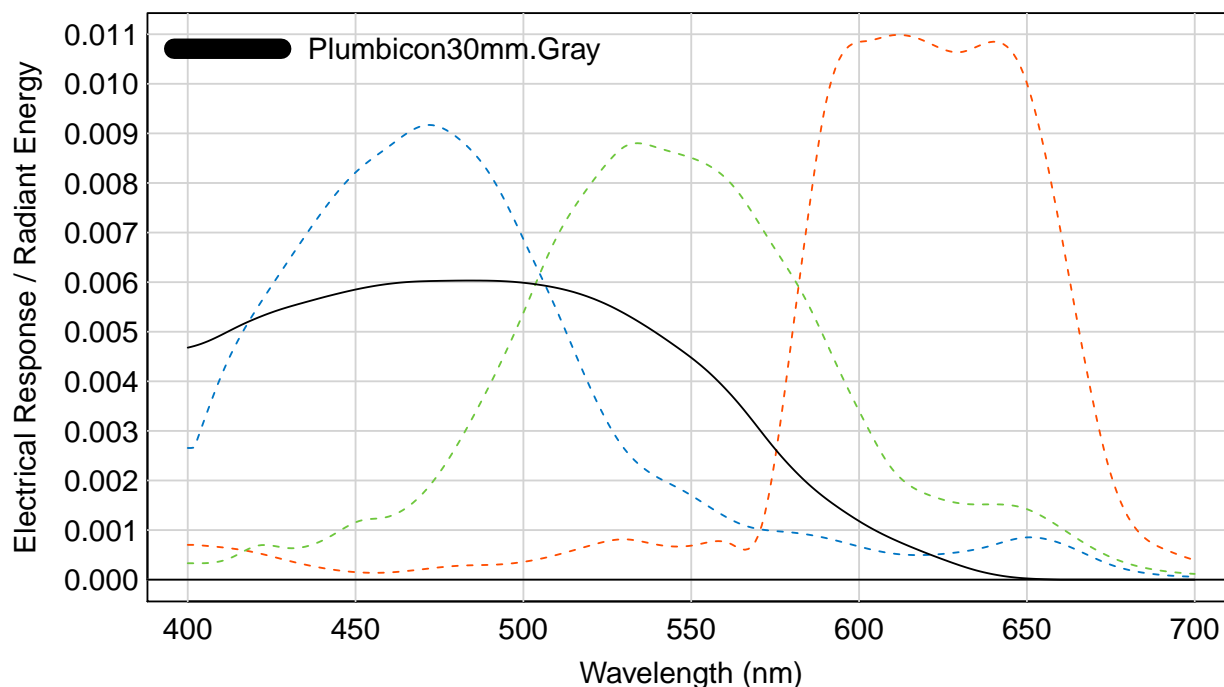


Figure 6: plumbicon (solid) vs Dragon (dashed)

```
par( omi=c(0,0,0,0), mai=c(0.5,0.9,0.1,0) )
plot( dragon, main='', lty=2, legend=FALSE )
plot( plumbicon, col='black', lty=1, add=TRUE, legend='topleft' )
```

The integral of all 4 curves is 1. Now matrix the Dragon camera to emulate the plumbicon. A filter is not used here, since the plumbicon has only one output channel, the problem is underdetermined and we could get an **exact** match with a filter.

```
dragon.mod = emulate( dragon, plumbicon, filter=FALSE, matrix=TRUE )
specnames( dragon.mod ) = "Dragon, matrixed"
combo = bind( plumbicon, dragon.mod )
par( omi=c(0,0,0,0), mai=c(0.5,0.9,0.2,0) )
plot( combo, main='', lty=c(1,2), col='black' )
```

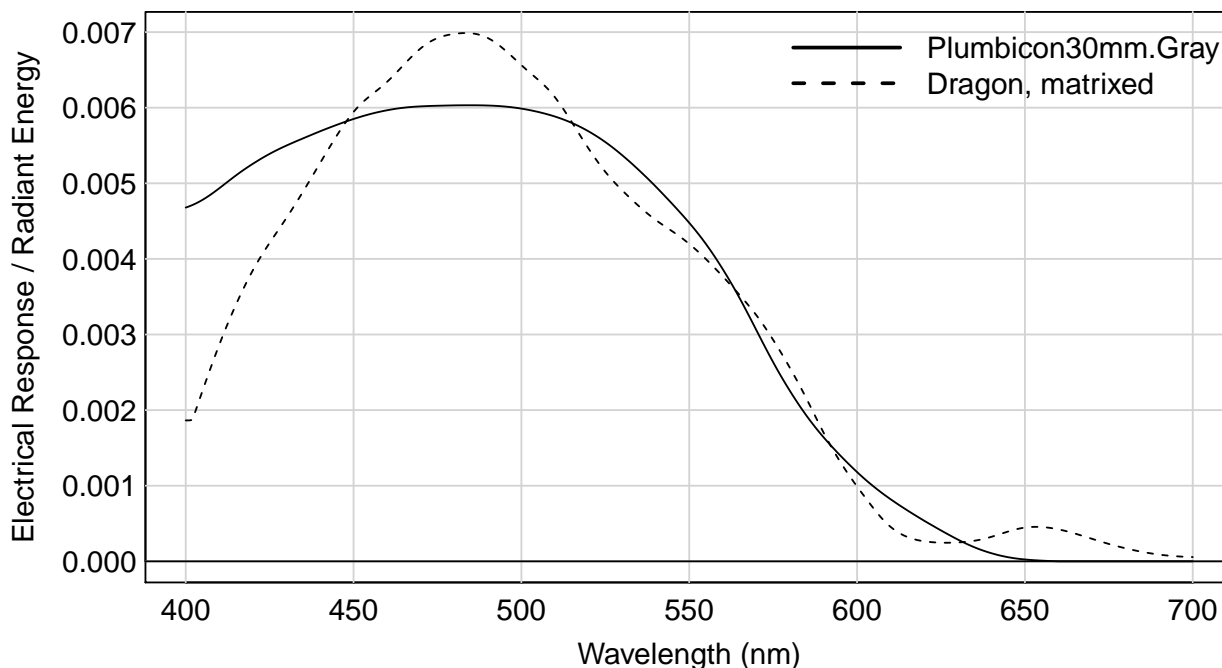


Figure 7: Plumbicon camera (solid) vs the modified Dragon camera (dashed)

The match on the interval [400,500] is not good. The RGB weights are attached to `dragon.mod` and easy to display. Note that the red weight is small.

```
t( attr(dragon.mod,"emulate")$A )
                                R      G      B
Plumbicon30mm.Gray -0.06454983 0.3641843 0.6736629
```

Calculate the *ColorChecker* graylevel responses from both cameras and display them.

```
MacbethCC = resample(MacbethCC,wave=wave)
graylevel = product( illum, MacbethCC, plumbicon)
RGB.plumbicon = matrix( graylevel, length(graylevel), 3 )
# in cbind() use as.data.frame.model.matrix() so RGB.plumbicon is a single column
df.plumbicon = cbind( as.data.frame.model.matrix(RGB.plumbicon), extradata(MacbethCC) )
par( oim=c(0,0,0,0), mai=c(0,0,0,0) )
plotPatchesRGB( df.plumbicon, back='black', labels=FALSE )
# repeat with dragon.mod camera, and add to existing plot, as triangles
graylevel = product( illum, MacbethCC, dragon.mod)
RGB.dragon = matrix( graylevel, length(graylevel), 3 )
df.dragon = cbind( as.data.frame.model.matrix(RGB.dragon), extradata(MacbethCC) )
plotPatchesRGB( df.dragon, back='black', labels=FALSE, add=T, shape='bottomright' )
```

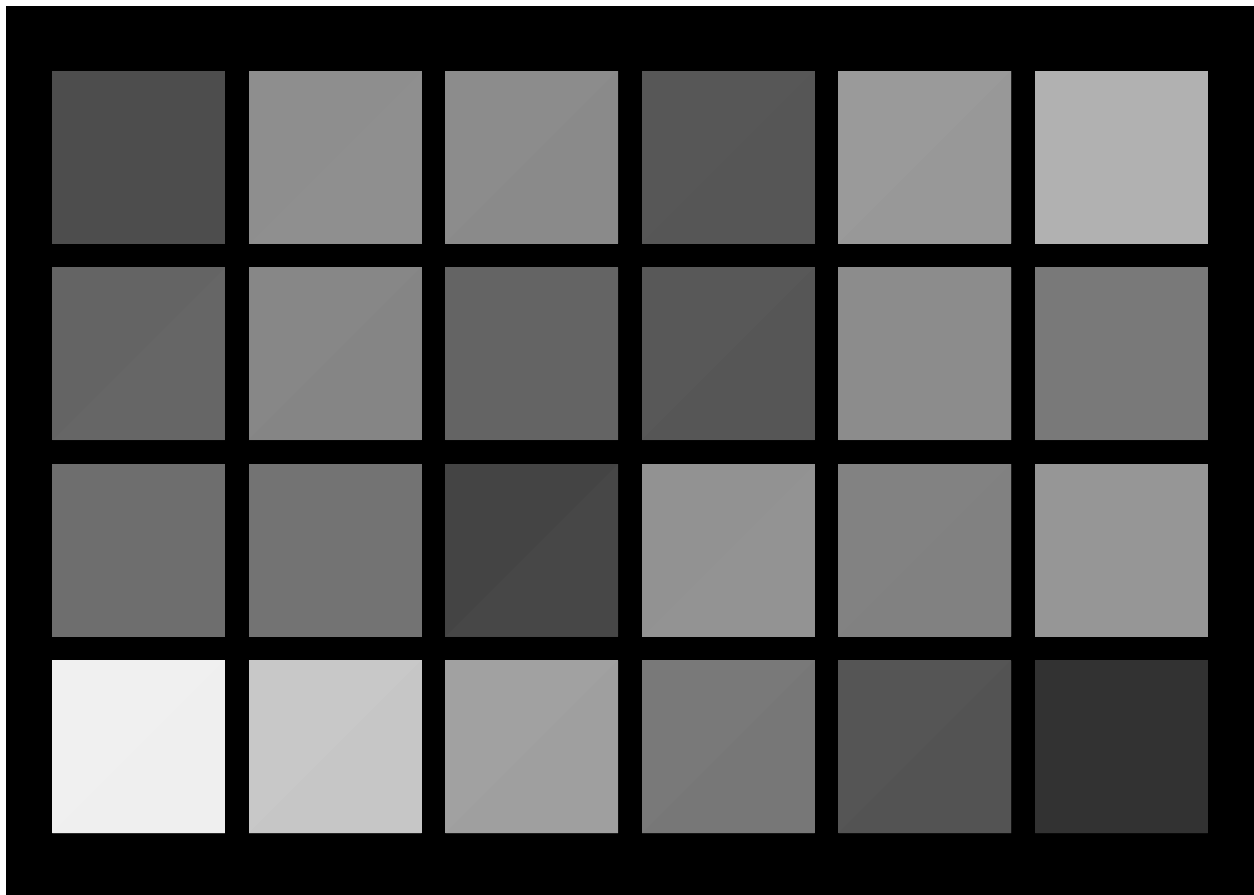



Figure 8: Rendering with Illuminant E, with matrixed Dragon in bottom right half

Despite the mismatch on the interval $[400,500]$, the visual agreement is pretty good.

References

- [1] R. F. Lyon and P. M. Hubel, “Eyeing the camera: Into the next century,” in *in Proc. IS&T/SID 10th Color Imaging Conference*, vol. 10, (Scottsdale, AZ, USA), pp. 349–355, 2002.
- [2] S. Bezryadin, “Quality criterion for digital still camera,” in *Proceedings SPIE*, vol. 6502, 2007.
- [3] Wayne E. Bretl, “Viewing 1950s Color, Over 50 Years Later,” 2008. <http://www.bretl.com/Viewing>
- [4] Danny Pascale, “The ColorChecker, page 2.” <http://www.babelcolor.com/colorchecker-2.htm>.
- [5] G. D. Finlayson and M. S. Drew, “Constrained least-squares regression in color spaces,” *Journal of Electronic Imaging*, vol. 6, pp. 484–493, October 1997.
- [6] ISO/17321, “Graphic technology and photography – Colour characterisation of digital still cameras (DSCs) – Part 1: Stimuli, metrology and test procedures,” standard, International Organization for Standardization, Geneva, CH, 2012.

Appendix

This document was prepared April 1, 2018, with the following configuration:

- R version 3.4.4 (2018-03-15), i386-w64-mingw32
- Running under: Windows 7 (build 7601) Service Pack 1
- Matrix products: default
- Base packages: base, datasets, grDevices, graphics, methods, stats, utils
- Other packages: colorSpec 0.7-3, knitr 1.20
- Loaded via a namespace (and not attached): MASS 7.3-49, Rcpp 0.12.16, backports 1.1.2, compiler 3.4.4, digest 0.6.15, evaluate 0.10.1, highr 0.6, htmltools 0.3.6, magrittr 1.5, minpack.lm 1.2-1, rmarkdown 1.9, rprojroot 1.3-2, stringi 1.1.7, stringr 1.3.0, tools 3.4.4, yaml 2.1.18